



## Cowley County Economic Development Partnership

Debra Teufel, Director

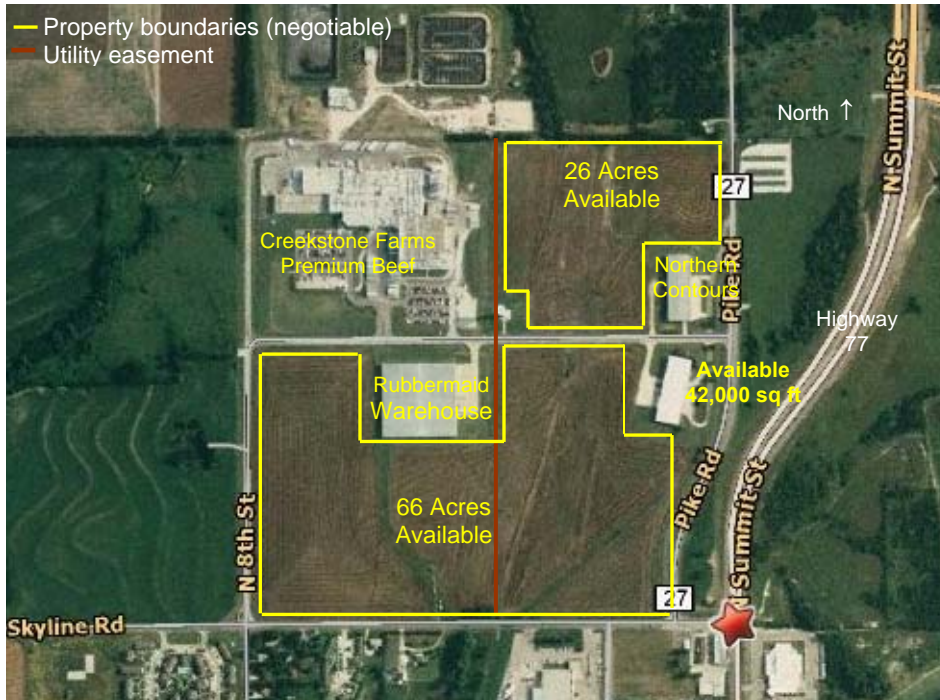
PO Box 832, Winfield, KS 67156

Phone: 620-221-9951 or 620-442-3094

Fax: 620-221-7782 Web: [www.cowleyfirst.com](http://www.cowleyfirst.com)

Email: [dteufel@cowleycounty.org](mailto:dteufel@cowleycounty.org)

### Site #1 - Goff Industrial Park, Arkansas City, KS 92 acres available



Goff Industrial Park is located just north of the city limits of Arkansas City. Land is owned by local economic development group Arkansas City Industries. Tenants of this industrial park include Creekstone Farms Premium Beef, a major food processing facility employing over 800, and Northern Contours and a large warehouse facility. The City of Arkansas City has invested in major improvements to the roads, water, and sewer services at this site. Sites are available for new construction at \$5,000/acre. Arkansas City Industries is willing to negotiate an attractive sale price to draw quality jobs to the industrial park and has additional land optioned west of 8<sup>th</sup> Street for future expansion.

#### **Utilities:**

Power Supplier: Westar Energy Phase: 3 Voltage: 480 Transformer: 600 KVA/KW  
Nearest two substations- Oak Sub and Prairieland Sub: 8 ½ MW currently unused on substations  
Natural Gas Supplier: Kansas Gas Service Size of Line: 6”  
Sewer Supplier: Arkansas City Size of Line: 8”  
Water Supplier: Arkansas City Size of Line: 12”  
-Industrial Park has independent water tower from Arkansas City  
Fiber providers: AT&T and Cox Business Services  
Phase 1 available for review

#### **Transportation:**

Distance from Interstate: 18 miles – Interstate 35  
Distance from 4-lane hwy: ½ mile – US Highway 77  
Distance from Other Highways: 3 miles – US Highway 166; 10 miles – US Highway 160  
Distance from Commercial Airport: 50 miles- Wichita Mid-Continent Airport  
Distance from Regional Airport: 5 miles- Strother Field Industrial Park & Airport

**Contact:** David Schaller, Arkansas City Industries – 620-441-2111 or [dschaller@homenational.com](mailto:dschaller@homenational.com)

# Site #1 - Goff Industrial Park, Arkansas City, KS

