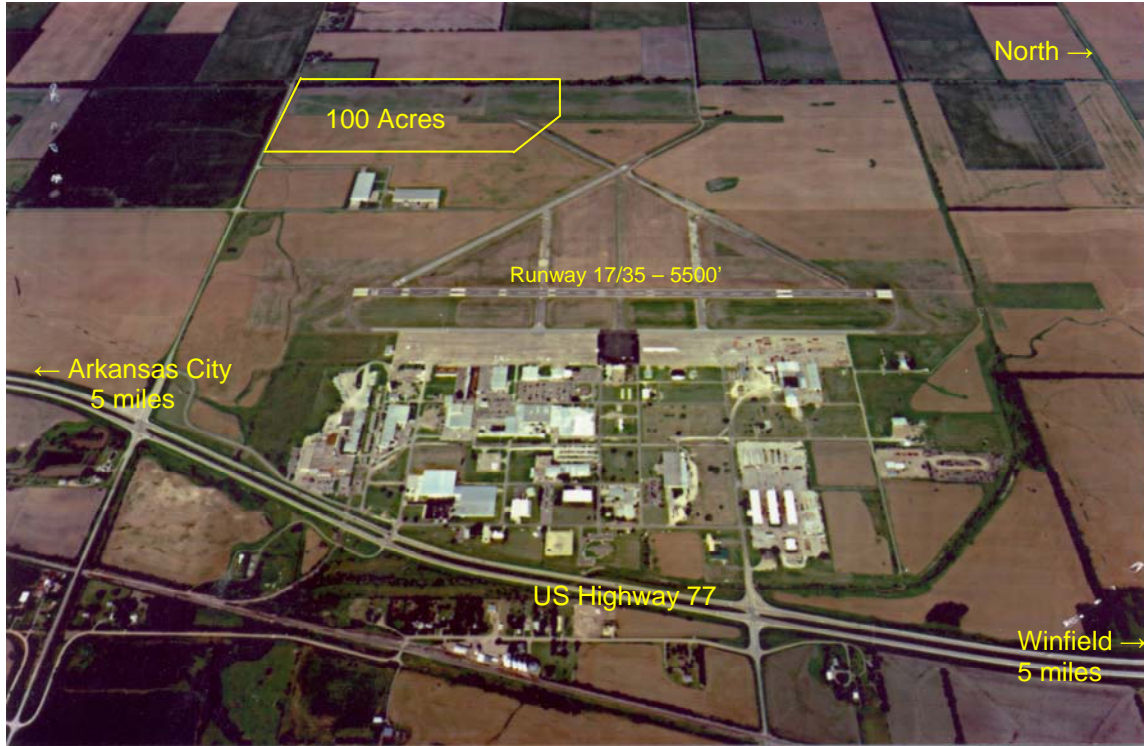




Cowley County Economic Development Partnership

Debra Teufel, Director
PO Box 832, Winfield, KS 67156
Phone: 620-221-9951 or 620-442-3094
Fax: 620-221-7782 Web: www.cowleyfirst.com
Email: dteufel@cowleycounty.org

Strother Field Industrial Park, Winfield, KS 100 acres available



Location:

Distance to 4-lane highway: ½ mile – US Highway 77
Distance to 2-lane highway: 5 miles north to Winfield – US Highway 160
7 miles south to Arkansas City – US Highway 166
Distance to Interstate: 23 miles – Interstate 35 via US Highway 160
Distance to Commercial Airport: 50 miles – Wichita Mid-Continent Airport

Utilities:

Water- provided by Strother Field
Sewer- provided by Strother Field
Electric- provided by the City of Winfield
Gas- provided by the City of Winfield
Fiber served by AT&T

For lease or sale based on fair market value.

Ownership:

Strother Field – Cities of Arkansas City and Winfield
Shawn McGrew, Manager
PO Box 747
Winfield, KS 67156
Phone: 620-221-9280



Strother Field Industrial Park Aerial View

